

E6571A and N4018A Run-Time Wireless Test Managers

Run-Time Installation and File Transfer Procedures

Table of Contents

- 1 Introduction**
- 2 WTM Run-Time Overview**
- 3 Develop Custom WTM Application**
- 4 Install Run-Time WTM on the PC**
 - First-Time WTM Installation**
 - Updated or Upgraded WTM Installation**
- 5 Transfer Custom Application Files to Run-Time PC**
- 6 Getting Help**
- 7 WTM Installation CD-ROM Duplication**
- 8 WTM System Requirements**



1 Introduction

Standard Wireless Test Manager

E6560A, E6561A, E6562A, E6563A,
E6564A, E6566A, E6568A, N4019A

Run-Time Wireless Test Manager

E6571A, N4018A (for N4019A only)

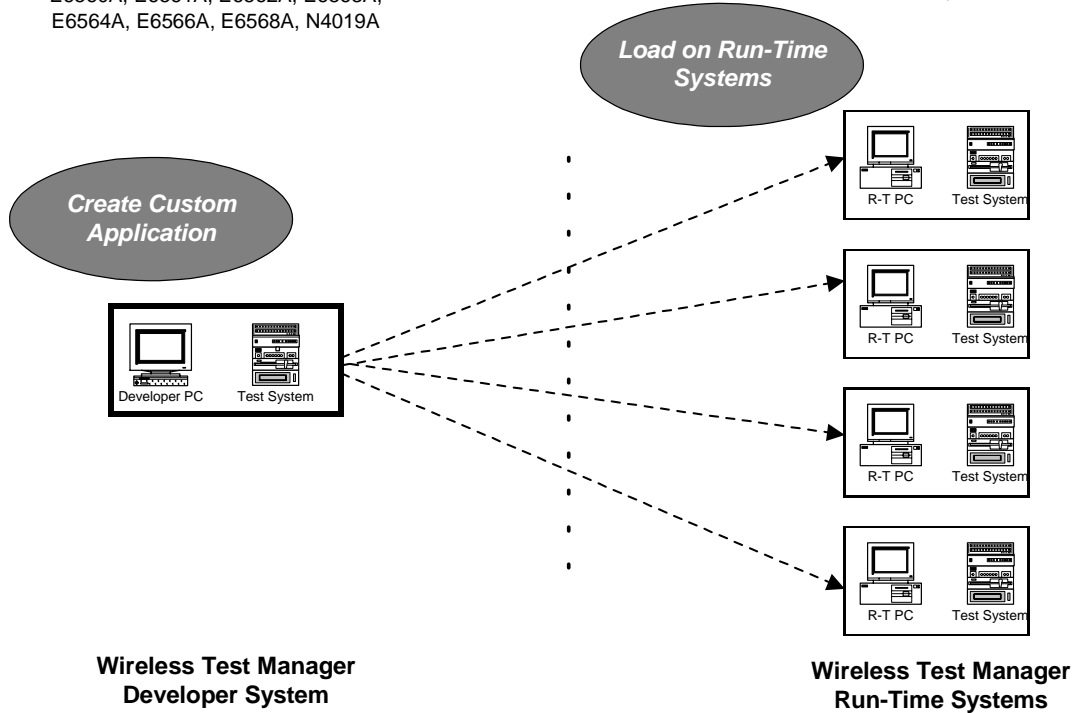


Diagram 1. Standard and Run-Time Wireless Test Managers

This procedure explains how to install the wireless test manager and custom applications onto a run-time system PC. Diagram 1 shows how the standard wireless test managers and run-time are used together. Use a standard wireless test manager to develop and prove a custom application then install that custom application onto run-time systems. The E6571A and N4018A provide a run-time security key and software license for the run-time system PC. The standard wireless test manager CD-ROM or CD-image is used to install the run-time wireless test manager onto each run-time system PC. Duplicating the wireless test manager CD-ROM is restricted. See Section 7 in this procedure for details.

2 Overview - Steps to deploy a custom WTM application

- Develop custom application using a standard wireless test manager product
- Load run-time wireless test manager to PCs
- Transfer custom wireless test manager application to run-time PCs



3 Develop the custom application

Follow the steps listed below to develop a custom WTM application. These steps allow you to specify all the aspects of your WTM run-time application including test routines, test results data storage, hardware configuration and more.

- Specify hardware set-up
- Develop custom test plans and test steps as needed
- Set test parameters and specifications as needed
- Set data storage files or method if desired
- Set-up path loss files
- Remove unwanted test plans and steps
- Validate and verify test plans
- Specify operator user interface permissions and security
- Save custom application

To get more information, select the Help button  on the toolbar to open the WTM's online help.

4 Install Run-Time WTM on Run-Time System PC

(See Section 8 to view list Run-Time WTM Requirements)

4.1 Install PC operating system

WTM requires Windows 2000, XP, NT or 98. (E6563A version 01.00 for AMPS/136 is not XP compatible.)

4.2 Install Microsoft Internet Explorer 5.0 or later.

WTM requires Microsoft Internet Explorer 5.0 or later to access application HELP.

4.3 Install interfaces and drivers needed on your run-time PC

Install a GPIB interface on your run-time PC. WTM is also compatible with USB to GPIB adapters. Once the hardware is installed, load the VISA drivers for your interface. WTM requires the VISA drivers, not IEEE 488 drivers. Contact the interface manufacturer if you don't have VISA drivers for your interface. N4019A/N4018A Bluetooth™ WTM requires installation of E1852B software and also supports E1852B parallel interface.

4.4 Install hardware security key

Attach the Agilent run-time security key to the PC parallel port (1218-0715 Wireless Mgr Key B for any WTM or 1218-0723 Wireless Mgr Key E for Bluetooth WTM only.)



4.5 Choose installation type

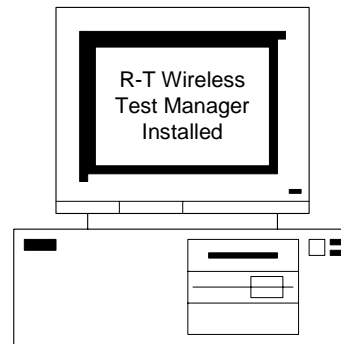
The installation procedure is different for a first-time install and an update or upgrade install.

Run-Time First-Time Install



Use Sections 4.6 & 4.7

Run-Time Update Install

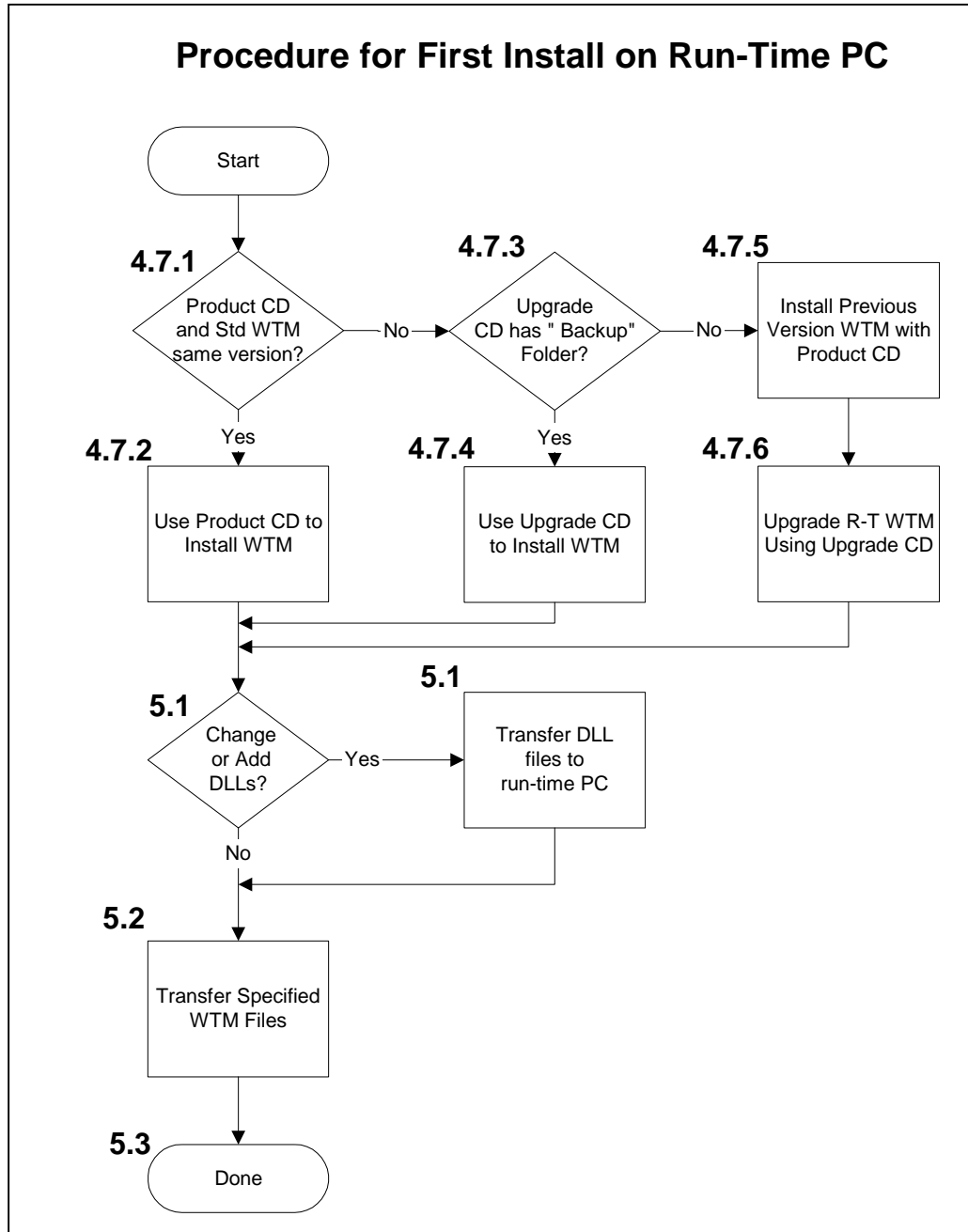


Use Sections 4.8 & 4.9

Use the first-time install procedure every time you install a different model wireless test manager on a run-time PC. For example, if you have GSM/GPRS (E6566A) installed on a run-time PC and want to add CDMA (E6560A), use the first-time install procedure and the E6560A product CD-ROM. To do a first-time install, proceed to section **4.6**.

Use the update install to modify a custom application of the same model on a run-time PC. To do an update install, proceed to section **4.8**.

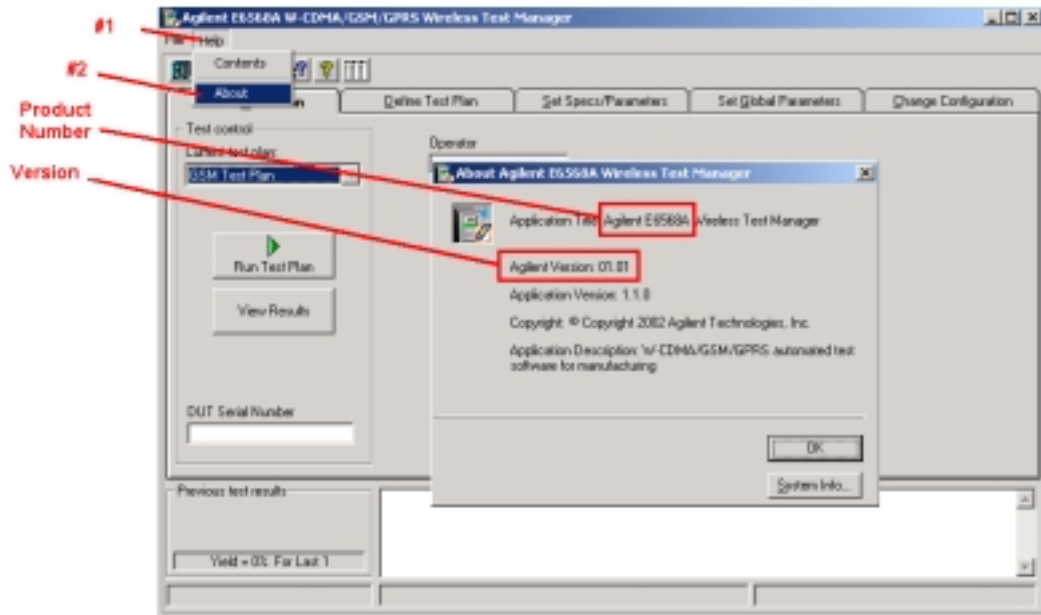
4.6 First Time Install Flowchart



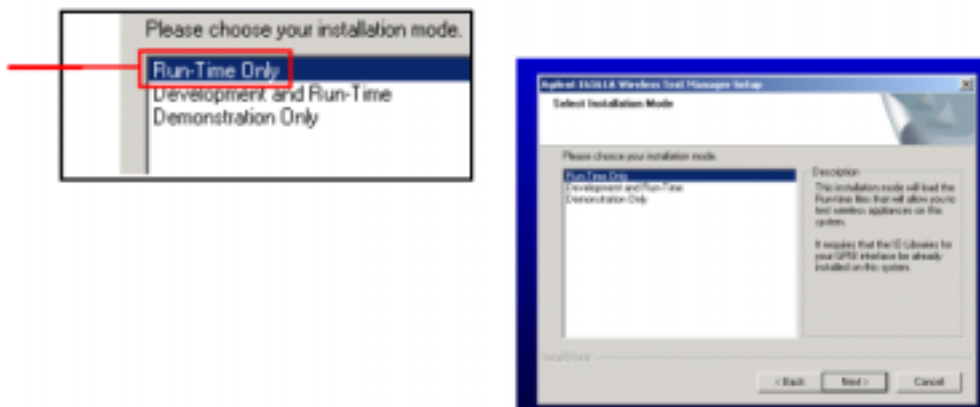
4.7 First Time Install Procedure

4.7.1 The run-time wireless test manager (WTM) and standard WTM must be the same product number and version. To determine WTM version, select "Help" and "About" from the administrator interface as shown below.

- If the standard WTM and product CD-ROM are the same version, proceed to step 4.7.2.
- If the standard WTM has been upgraded, find the product CD-ROM and upgrade CD-ROM, proceed to step 4.7.3.



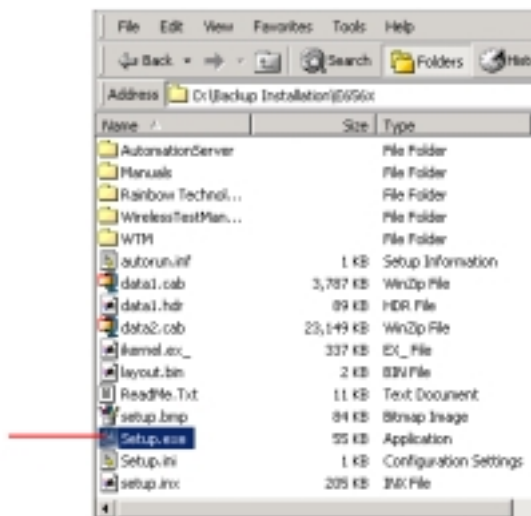
4.7.2 Install the current version of the WTM on the run-time PC using the product CD-ROM. Follow the instructions on the CD-ROM insert to launch the InstallShield application. When prompted, choose "Run-Time Only" install. See Section 7 for information regarding copying the Agilent WTM Installation CD-ROM.



Run-Time WTM software is now installed on your PC. To load your custom application and complete the installation process, go to step 5.1.

STEPS 4.7.3 – 4.7.6 ARE FOR SPECIAL CASES

- 4.7.3 If the standard WTM software loaded on your development PC has been upgraded using an E656xU product, explore the upgrade CD-ROM for a directory named "...Backup Installation\E656x". (E656x is the product number.) If the upgrade CD-ROM has the "Backup Installation" folder, go to step 4.7.4. If your upgrade CD-ROM does not have the "Backup Installation" folder, go to step 4.7.6.
- 4.7.4 Install the WTM on the run-time PC from the upgrade CD-ROM. In the upgrade CD-ROM, open the "..Backup Installation/E656x" folder and run "Setup.exe". See Section 7 for information regarding copying the Agilent WTM Installation CD-ROM.



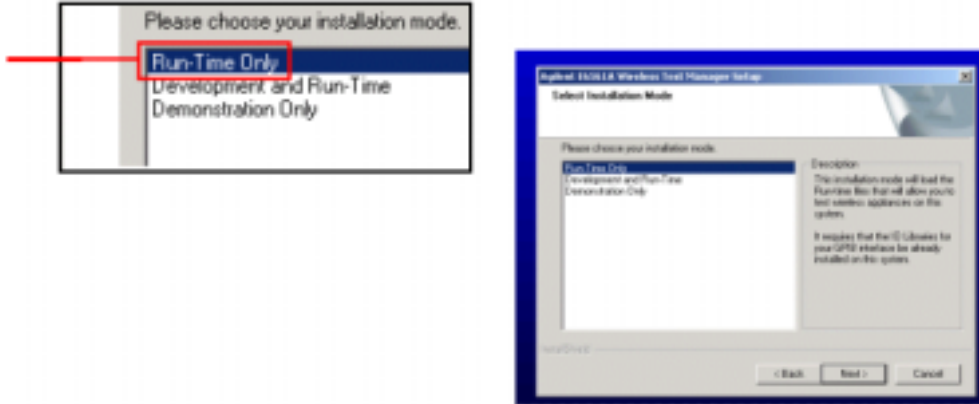
This launches an InstallShield application. When prompted, choose "Run-Time Only" install.



Run-Time WTM software is now installed on your PC. To load your custom WTM application and complete the installation process, go to step 5.1.



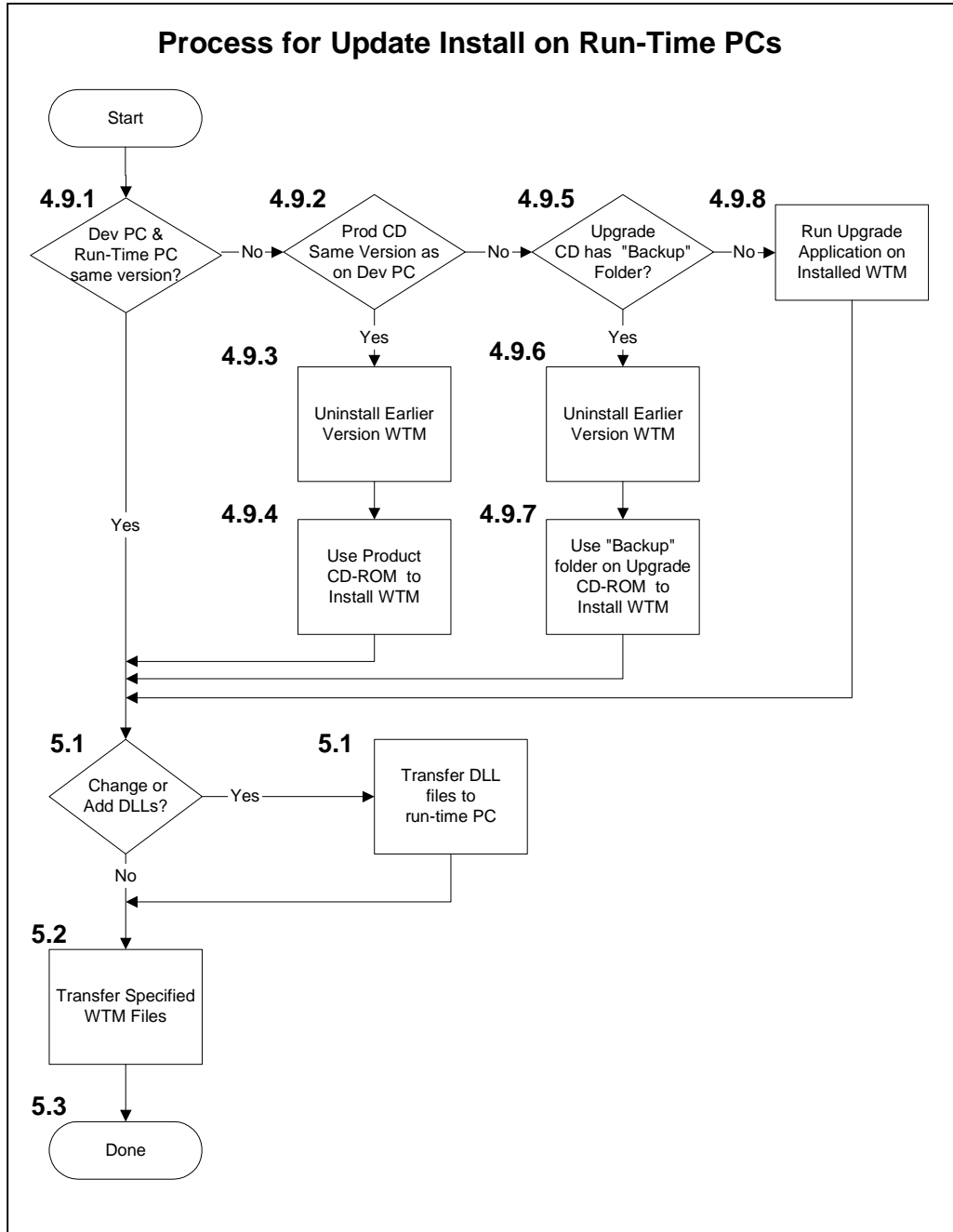
- 4.7.5 If your upgrade CD-ROM does not have the “Backup Installation” folder, use the original product CD-ROM to install WTM on the run-time PC. Follow the instructions on the product CD-ROM to launch the InstallShield application. When prompted, choose “Run-Time Only” install. See Section 7 for information regarding copying the Agilent WTM Installation or Upgrade CD-ROM.



- 4.7.6 Upgrade the run-time WTM to the same version as the standard WTM. Run the upgrade application from the E656XU upgrade CD-ROM. Follow the instructions on the upgrade CD-ROM insert to launch the upgrade application. You need only install the latest upgrade if you have done more than one upgrade on the standard WTM. See Section 7 for information regarding copying the Agilent WTM Installation or Upgrade CD-ROM.

Run-Time WTM software is now installed on your PC. To load your custom WTM application and complete the installation process, go to step 5.1.

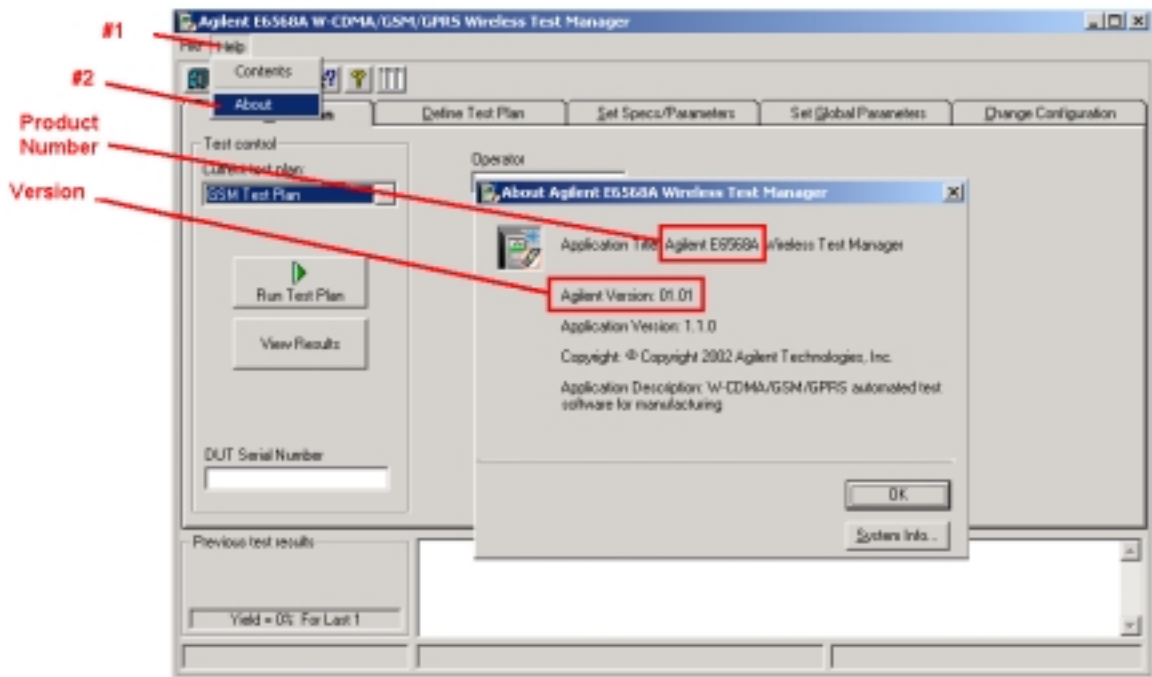
4.8 Update or Upgrade Install Flowchart



4.9 Update/Upgrade Install Procedure (continued from previous page)

4.9.1 The run-time wireless test manager and standard wireless test manager must be the same product number and the same version. To determine WTM version, select "Help" and "About" from the administrator interface as below.

- If the standard WTM is the same product and version as installed on the run-time WTM, the correct Run-Time WTM software is already on your PC. To load your custom WTM application and complete the installation process, go to step 5.1.
- If the standard WTM has been upgraded or is a different product, proceed to step 4.9.2.



STEPS 4.9.2 – 4.9.7 ARE FOR SPECIAL CASES

4.9.2 If you have a different product or a different version of WTM on the Development and run-time PCs:

- If you have a different product, use the first-time install. Go to step 4.6 First-Time Installation.
- If you have different software versions of the same product and you have the WTM product CD-ROM for the software on the Development PC, go to step 4.9.3.
- If you have upgraded your Development PC WTM using an E656xU product, go to step 4.9.5.

4.9.3 Uninstall WTM from the run-time PC.

- Select "Start" from the Windows taskbar
- Open "Add/Remove Programs" from the "Control Panel"
- Remove "Agilent Wireless Test Manager (E656xA)"



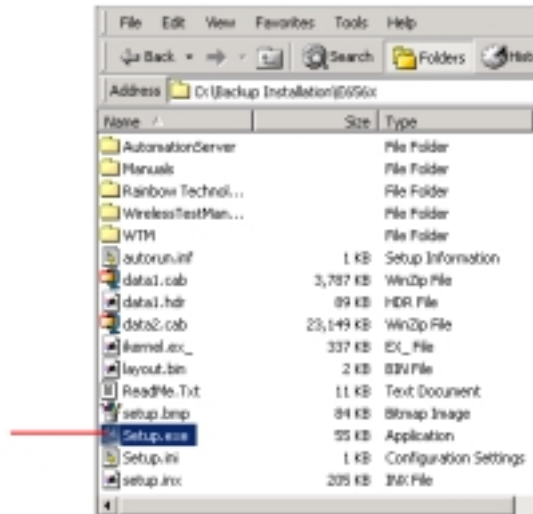
- 4.9.4 Install the WTM on the run-time PC from the product CD-ROM used to install WTM on the Development PC. Follow the instructions on the product CD-ROM to launch the InstallShield application. When prompted, choose "Run-Time Only" install. See Section 7 for information regarding copying the Agilent WTM Installation CD-ROM.



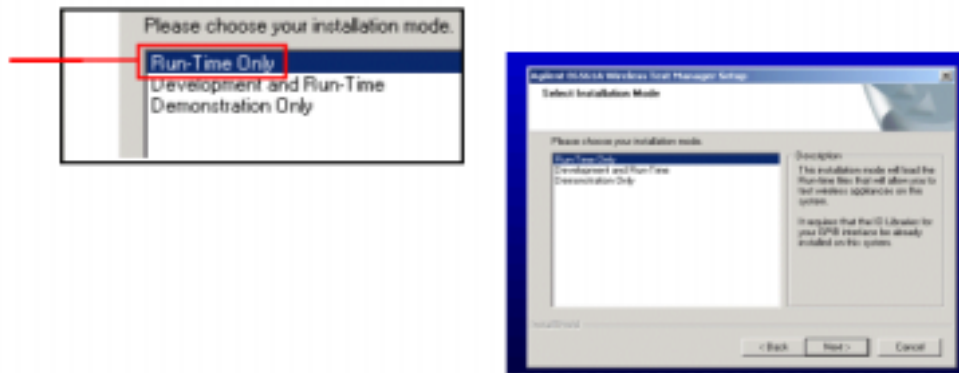
Run-Time WTM software is now installed on your PC. To load your custom WTM application and complete the installation process, go to step 5.1.

- 4.9.5 Your Development PC was upgraded using an E656xU.
- Explore the upgrade CD-ROM for a directory named "...Backup Installation/E656x". (E656x is the product number.)
 - If the upgrade CD-ROM has the "Backup Installation" folder, go to step 4.9.6.
 - If your upgrade CD-ROM does not have the "Backup Installation" folder, go to step 4.9.8.
- 4.9.6 Uninstall WTM from the run-time PC.
- Select "Start" from the Windows taskbar
 - Open "Add/Remove Programs" from the "Control Panel"
 - Remove "Agilent Wireless Test Manager (E656xA)"

- 4.9.7 Install the WTM on the run-time PC from the CD-ROM used to upgrade your Development PC. From the upgrade CD-ROM, open the “..Backup Installation/E656x” folder and run “Setup.exe”. See Section 7 for information regarding copying the Agilent WTM Installation or Upgrade CD-ROM.



This launches an InstallShield application. When prompted, choose “Run-Time Only” install.



Run-Time WTM software is now installed on your PC. To load your custom WTM application and complete the installation process, go to step 5.1.

- 4.9.8 If your upgrade product CD-ROM does not have the “Backup Installation” folder, run the upgrade application from the E656XU upgrade CD-ROM. Follow the instructions on the upgrade CD-ROM insert to launch the upgrade application. You need only install the latest upgrade if you have installed more than one upgrade on the standard WTM. See Section 7 for information regarding copying the Agilent WTM Installation or Upgrade CD-ROM.

Run-Time WTM software is now installed on your PC. To load your custom WTM application and complete the installation process, go to step 5.1.

5 Transfer Custom Application to Run-Time PC

5.1 If you've added or changed any DLLs, transfer them to the same directory on the run-time PC as on the development PC. DLLs include control drivers for device under test, test instruments and power supplies. Changing or adding DLLs is an advanced step, if you aren't certain you've affected DLLs, you haven't.

5.2 Transfer needed files from the Developer PC to the Run-Time PC. To transfer the files, overwrite the Help, RunTime, TestData and TestLocalization directories from the Development PC to the Run-Time PC.

If you used default install, these directories are at C:/ProgramFiles/Agilent/WirelessTestManager/E656x. If you have changed the default folders, use the folders you specified. See Table 1 for a list of files that need to be transferred from the Developer PC to the Run-Time PC.

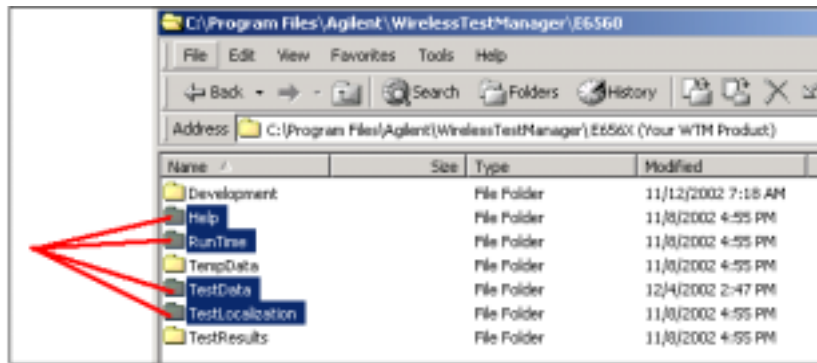


Table 1 - Files required for custom application transfer


File Directory /WirelessTestManager/E656X/	Description	File Names	Notes
Help	application help files	WirelessTest.chm Readme.txt	Unique files for different languages
RunTime	software application	E6560A tech SAM.exe	Such as < E6560A C2K SAM.exe >
TestData	database executive defaults path loss data	<i>tech_language</i> .mdb ExecSetting.xml <i>tech</i> PathLoss.xml <i>custom</i> PathLoss.xml	Such as < WCDMADB_English.mdb > Such as < GSMGPRSPathLoss.xml > Such as < Fixture1 PathLoss.xml >
Localization	Language table files	<i>language</i> .lng	Such as < Korean.lng >

Run-Time WTM software and your custom WTM application software are now installed on your PC.

To run the WTM select the wireless test manager icon from your desktop OR select "Start", "Programs", "Agilent Wireless Test Manager" and the wireless test manager product from the pull down list.



6 Getting Help

- 6.1** If you want more details on using the Wireless Test Manager, click the Help button  on the toolbar to open the Wireless Test Manager’s online help.
- 6.2** To find information about technical support, equipment service and repair, and training, visit the following Agilent Technologies Web site: <http://www.agilent.com/find/assist> .

7 CD-ROM Duplication Authorization for Run-Time Install

The terms for WTM CD-ROM duplication are listed in a software license certificate shipped with each standard WTM. For more information about duplication, see “WTM Software Duplication Guidelines” in the Key Library at www.agilent.com/find/wtmanagers .

8 Requirements

8.1 Wireless Test Manager Requirements

- At least one copy of the standard wireless test manager (WTM) product for the technology you are testing. Use Table 2 to find the technology you want to test and the corresponding required wireless test manager.
- The product CD-ROM that was used to install WTM on the developer PC.
- The newest E656xU upgrade CD- ROM if you have upgraded the developer WTM.
- One E6571A license and security key for each run-time PC.

Table 2 Technology and Wireless Test Manager Products

Technology	Wireless Test Manager Product
cdma2000, 95, AMPS	E6560A
GSM, GPRS	E6566A or E6561A
W-CDMA	E6562A
136(TDMA), AMPS	E6563A
1xEV-DO	E6564A
W-CDMA, GSM, GPRS	E6568A
Bluetooth™	N4019A

8.2 Run-Time PC Requirements

- Microsoft © Windows 2000, XP, NT or 98 (some versions of WTM do not support XP)
- Microsoft Internet Explorer Version 5.0 or later
- 500 MHz Pentium © III or higher
- 256 MB RAM recommended, 128 MB RAM minimum
- 200 MB free hard drive space
- CD-ROM drive
- GPIB card or converter with VISA drivers (one per test system)
- Parallel port (IEEE 1284, IETF 1287) for security key
- Serial ports for fixtures, device control, and bar code reader

8.3 Test Set (E5515C and Test Application or E1852B) Requirements

Check the wireless test manager product or technical overview at www.agilent.com/find/wtmanagers to make sure that your run-time system has the correct hardware options and test applications installed for the technology you wish to test.